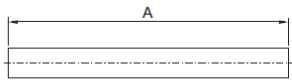


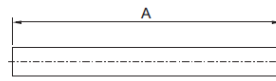
Tragprofil CP 40, Stahl



A mm	Best.-Nr. CP
500	6501.000
1000	6501.020

A_{min.} = 100 mm
A_{max.} = 2000 mm

Support section CP 40, steel



A mm	Model No. CP
500	6501.000
1000	6501.020

A_{min.} = 100 mm
A_{max.} = 2000 mm

Produktbeschreibung		Product description	
Beschreibung:	Befestigung an den Verbindungselementen mit 2 Klemmschrauben.	Description:	Attached to the connection components via 2 clamping screws.
Material:	Stahlrohr pulverbeschichtet	Material:	Steel conduit, powder-coated
Farbe:	RAL 7035	Colour:	RAL 7035
Lieferumfang:	Tragprofil	Supply includes:	Support section
Länge:	500 mm	Length:	500 mm
Materialstärke:	4 mm	Material thickness:	4 mm
Durchmesser:	48,3 mm	Diameter:	48.3 mm
Verpackungseinheit:	1 St.	Packs of:	1 pc(s).
Gewicht/VE:	2,1 kg	Weight/pack:	2.1 kg
EAN:	4028177262867	EAN:	4028177262867
Zolltarifnummer:	73269098	Customs tariff number:	73269098
ETIM 6.0:	EC000882	ETIM 6.0:	EC000882
ETIM 5.0:	EC000882	ETIM 5.0:	EC000882
eCl@ss 8.0/8.1:	27400556	eCl@ss 8.0/8.1:	27400556
eCl@ss 7.0/7.1:	27189261	eCl@ss 7.0/7.1:	27189261
eCl@ss 6.0/6.1:	27189261	eCl@ss 6.0/6.1:	27189261
eCl@ss 5.1/5.1.4:	27189248	eCl@ss 5.1/5.1.4:	27189248
Produktbeschreibung (lang):	CP Tragprofil CP 40 geschlossen, L: 500 mm, Stahl	Product description (long):	CP Support section CP 40, solid, L: 500 mm, steel